

ENVIRONMENTAL PERFORMANCE KPI - 2012

ENERGY EFFICIENCY INDICATOR:

| | | |
|---|----------|--------|
| Overall direct energy consumption: | MWh/year | 719,00 |
| Overall yearly outcome: | t/year | 286,40 |
| Energy efficiency: | MWh/t | 2,51 |

WASTE INTENSITY INDICATOR:

| | | |
|---|--------|---------|
| Total annual waste amount: | t/year | 11,5 |
| Total annual hazardous waste amount: | t/year | 0,67 |
| Overall yearly outcome: | t/year | 286,40 |
| Waste intensity - all waste: | - | 0,04015 |
| Waste intensity - hazardous waste: | | 0,00233 |

SPECIFIC WATER USE INDICATOR:

| | | |
|---------------------------------|-----------------------|------|
| Average water use: | m ³ /month | 65 |
| Average employee number: | head/month | 66 |
| Specific water use: | m ³ /head | 0,98 |

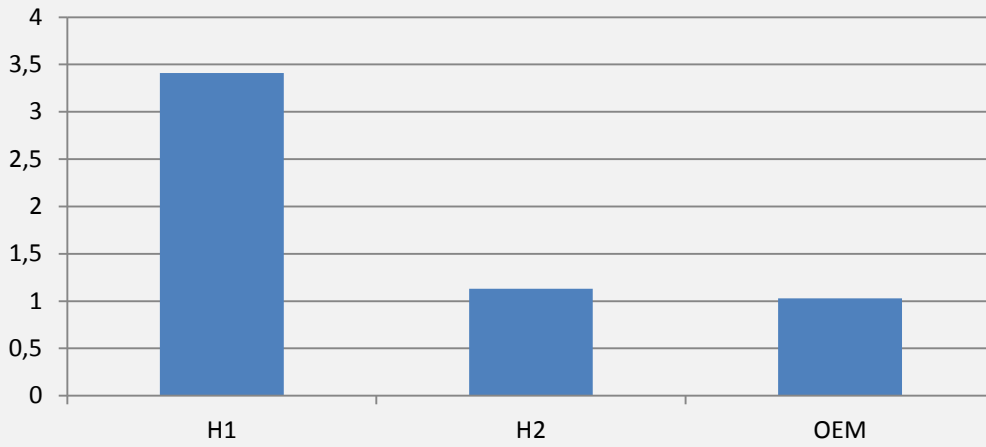
EMISSION INTENSITY INDICATOR:

| | | |
|--------------------------------|-------------------------|-------|
| Total GHE outcome: | t CO ₂ /year | 161,4 |
| Overall yearly outcome: | t/year | 286,4 |
| Emission intensity: | - | 0,56 |

GHE - Glass House Effect

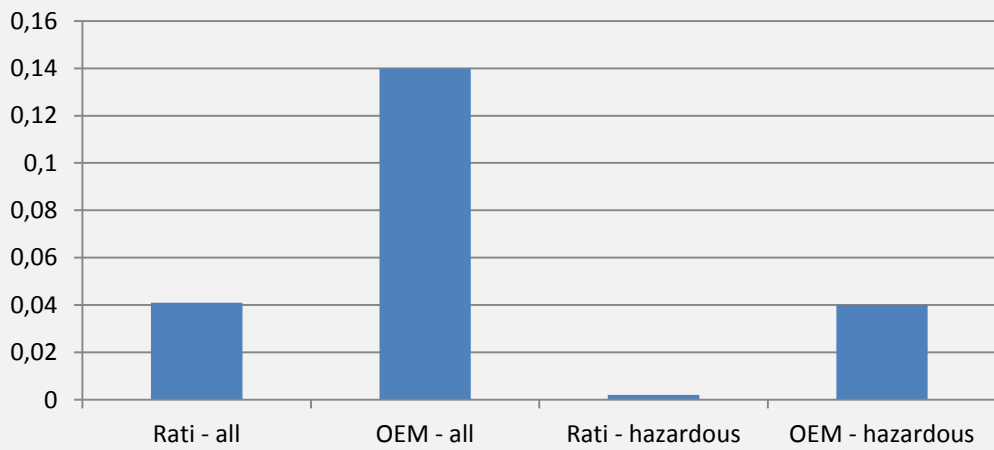


ENERGYEFFICIENCY (MWh/t)



H2 is corrected data:
data doesn't contain gas
consumption because the
new plant hasn't got gas
energy services
connection

WASTEINTENSITY



EMISSIONINTENSITY

